

Case study within the ICSC07 Spine Injuries in Sport Thoracic Spine

This is a real case study to help you bring all the knowledge together. This case study is for your own benefit and NOT MARKED.

Case study provided by Dr Alex Ruhe.

In the following case study, you will be following a 27 year old male, elite hockey player. As you go along, you will be given information about the patient. You will also be asked to answer a series of questions about the patient. Once you have answered each question, please click the blue "submit" button towards the bottom of the page to move on to the next question.



Pre-History Question: A 27-year old elite hockey player was deliberately stabbed with the end of a stick ("Butt Ending") in the rib cage laterally below the protective gear.

Question 1: Based on the limited history provided to you, list at list 10 differential diagnoses you would consider for this athlete.

Initial Side-Line Treatment

Initial side-line examination revealed marked sensitivity to touch and pressure over the ribs with difficulty breathing

Question 2: Based on the brief initial examination, jot down how your examination would proceed. Describe which orthopedic and neurological tests you would perform at this time.

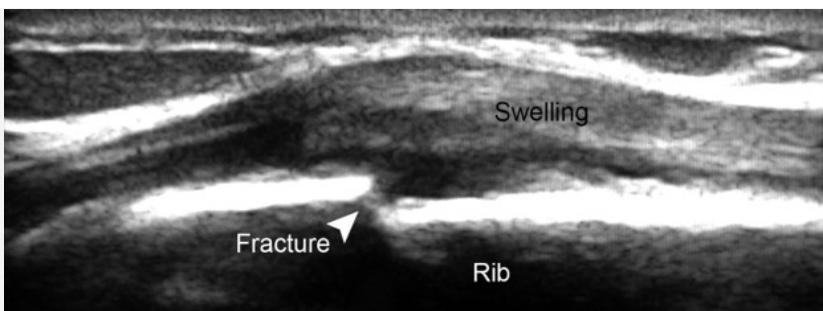
Further Examination Information

Based on your neurological examination, you found no neurological deficits. Orthopedic examination reveals pain along the sixth rib with lateral chest compression and anterior/posterior chest compression. You also chose to auscultate the lung fields and heart. Auscultation did not reveal any findings of concern.

Question 3: Based on your examination and finding, jot down your plan of action at this time?

Outcome:

The patient was removed from the rink and taken to a medical facility. On-site sonography revealed a swelling over the 6th rib with a step-defect of the cortical outline suggesting a rib fracture (which was later confirmed by x-ray)



Examination in hospital did not reveal any internal damage

Reflect on your answers above and your overall performance on this case study.

What, if anything, would you do differently if this had been your patient?